

Hunstead & Schoolstead: ESG Edge

A Strategic Narrative for Corporate & Philanthropic Decision-Makers

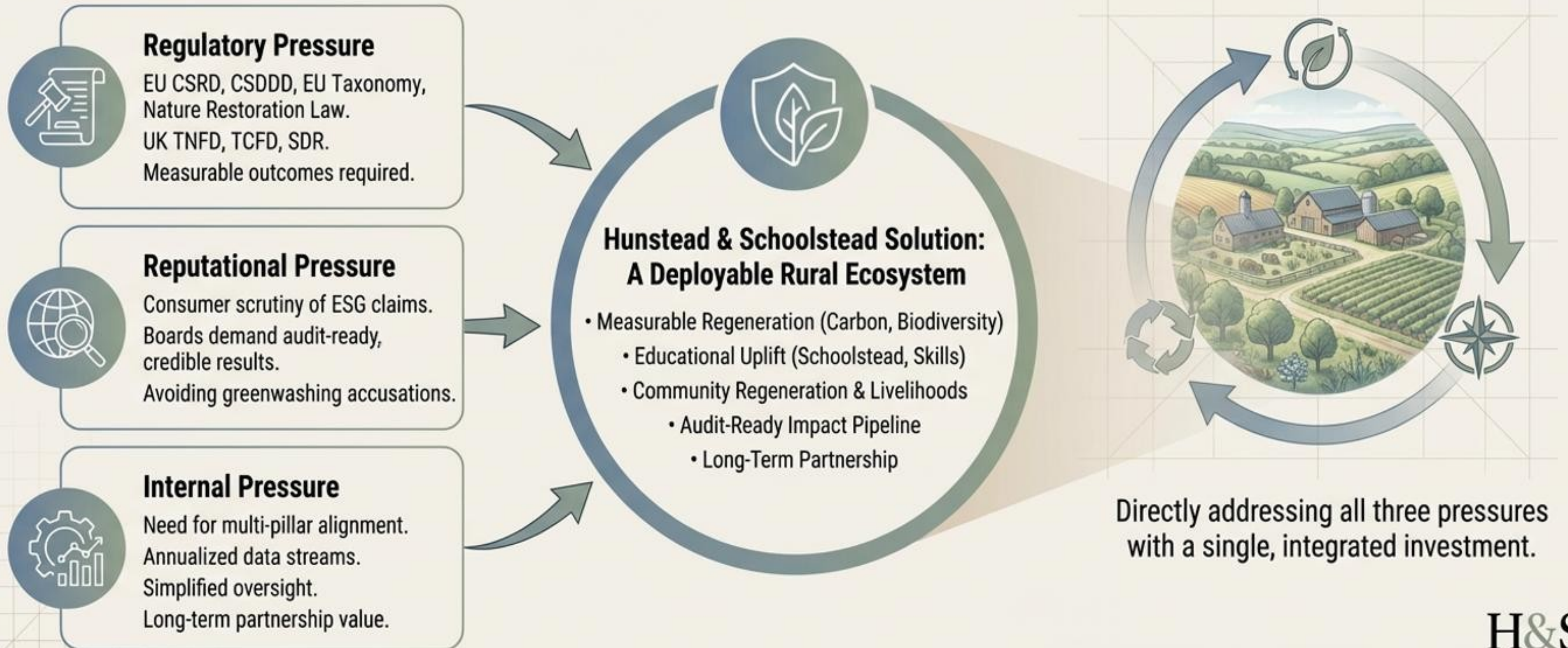


Integrated Rural Ecosystem · Audit-Ready Impact · Long-Term Partnership

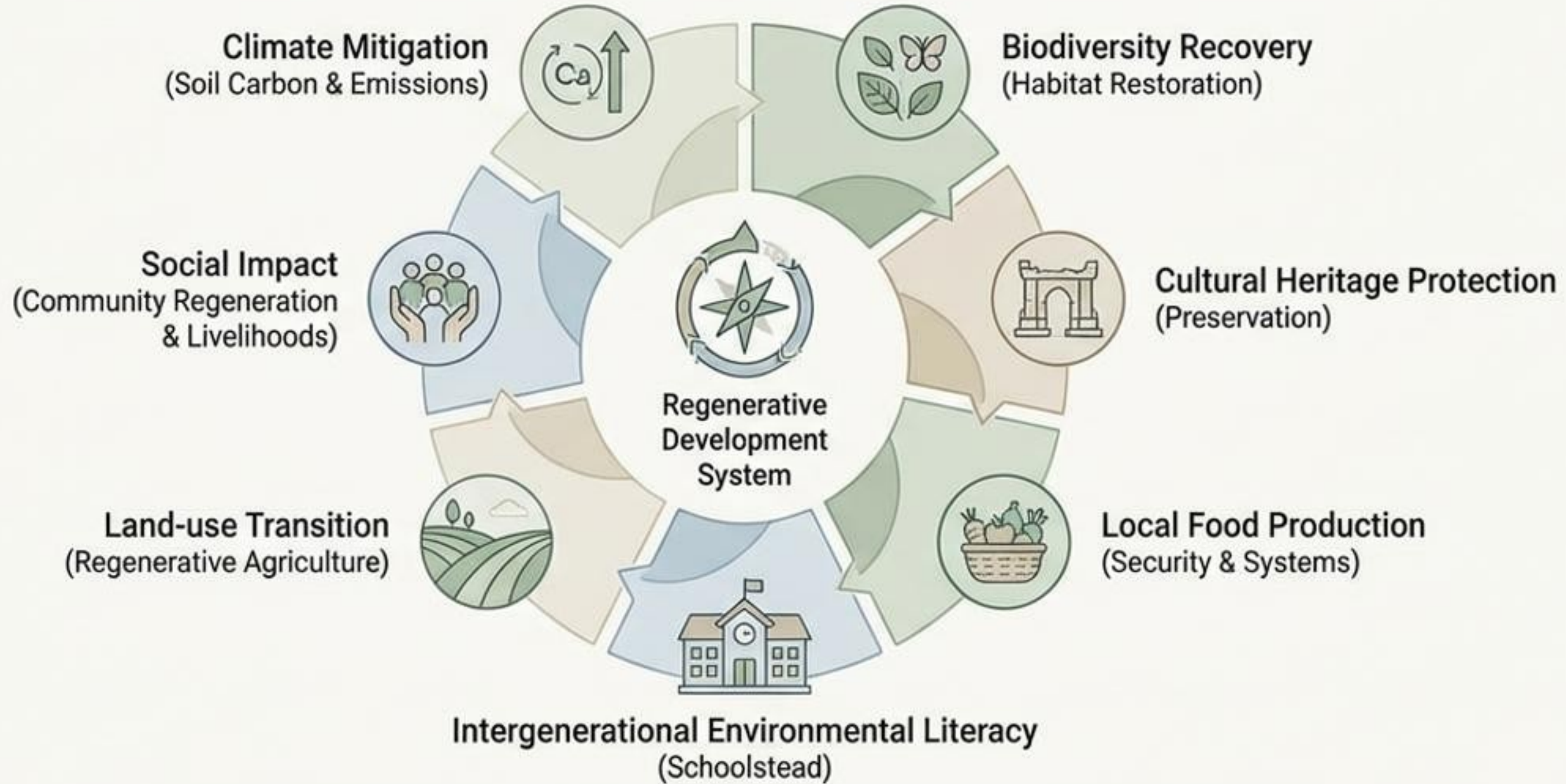


The Convergence of ESG Pressures & The Integrated Solution

Addressing Regulatory, Reputational, and Internal demands through Measurable Regeneration

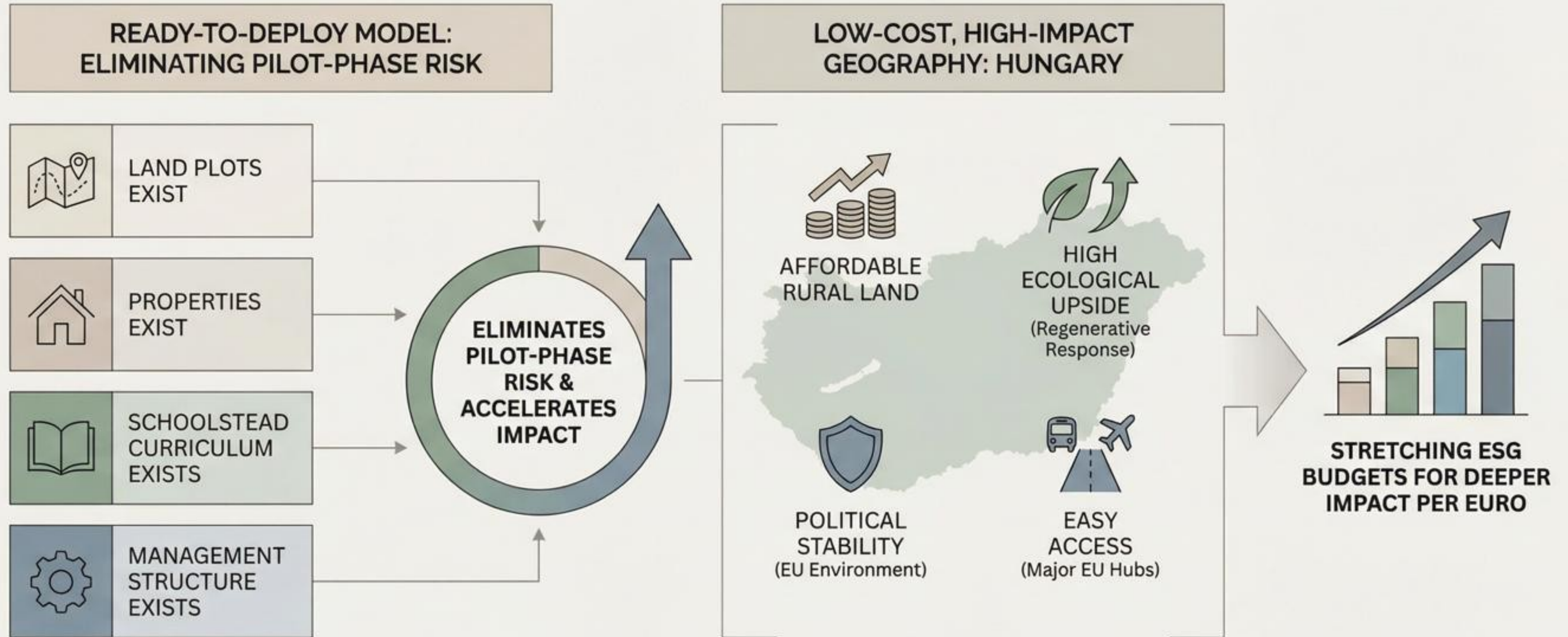


Hunstead & Schoolstead: A Fully Integrated Rural ESG Ecosystem



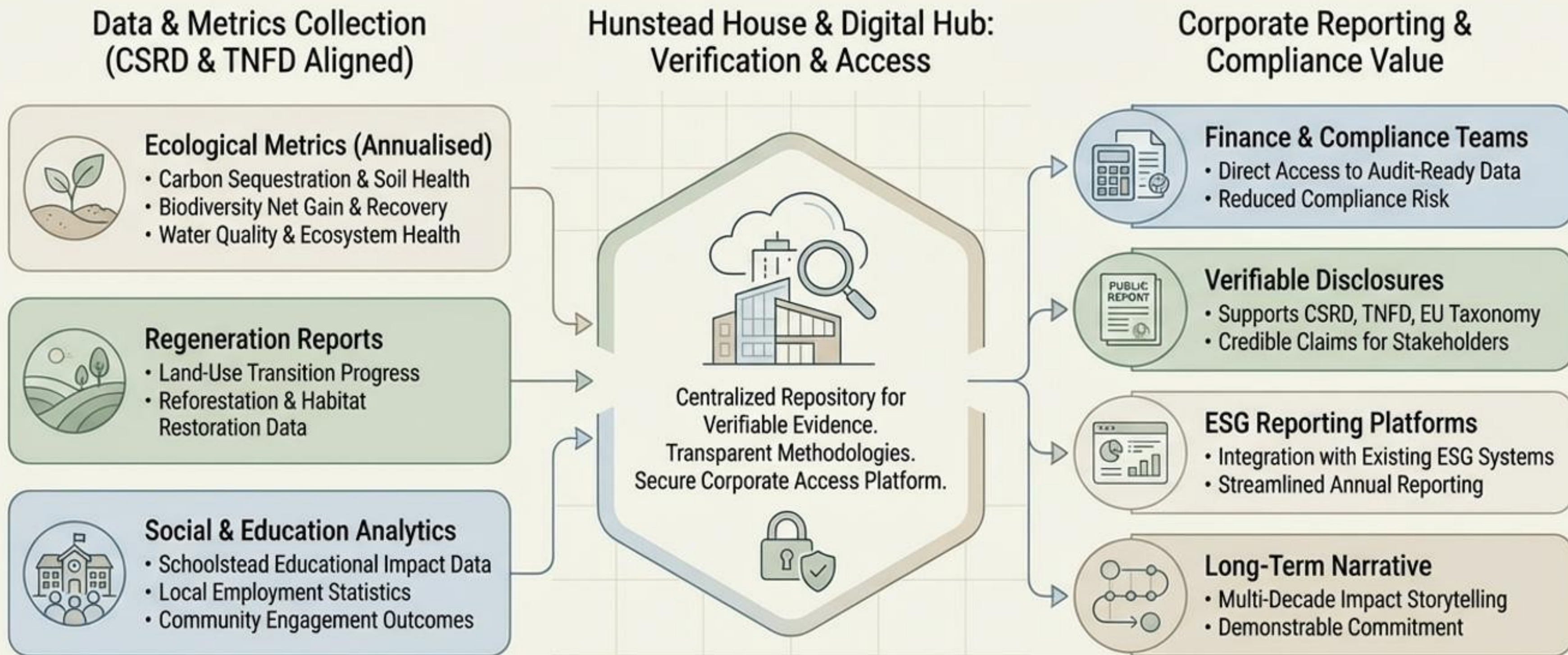
Key Advantage: Enables a single contract to cover multiple ESG metrics at once, providing a holistic, auditable impact

A Ready-to-Deploy Model with Low-Cost, High-Impact Geography



Hunstead & Schoolstead: Measurable, Audit-Ready Impact Pipeline

Providing CSRD- and TNFD-ready datasets for corporate finance and compliance disclosures.



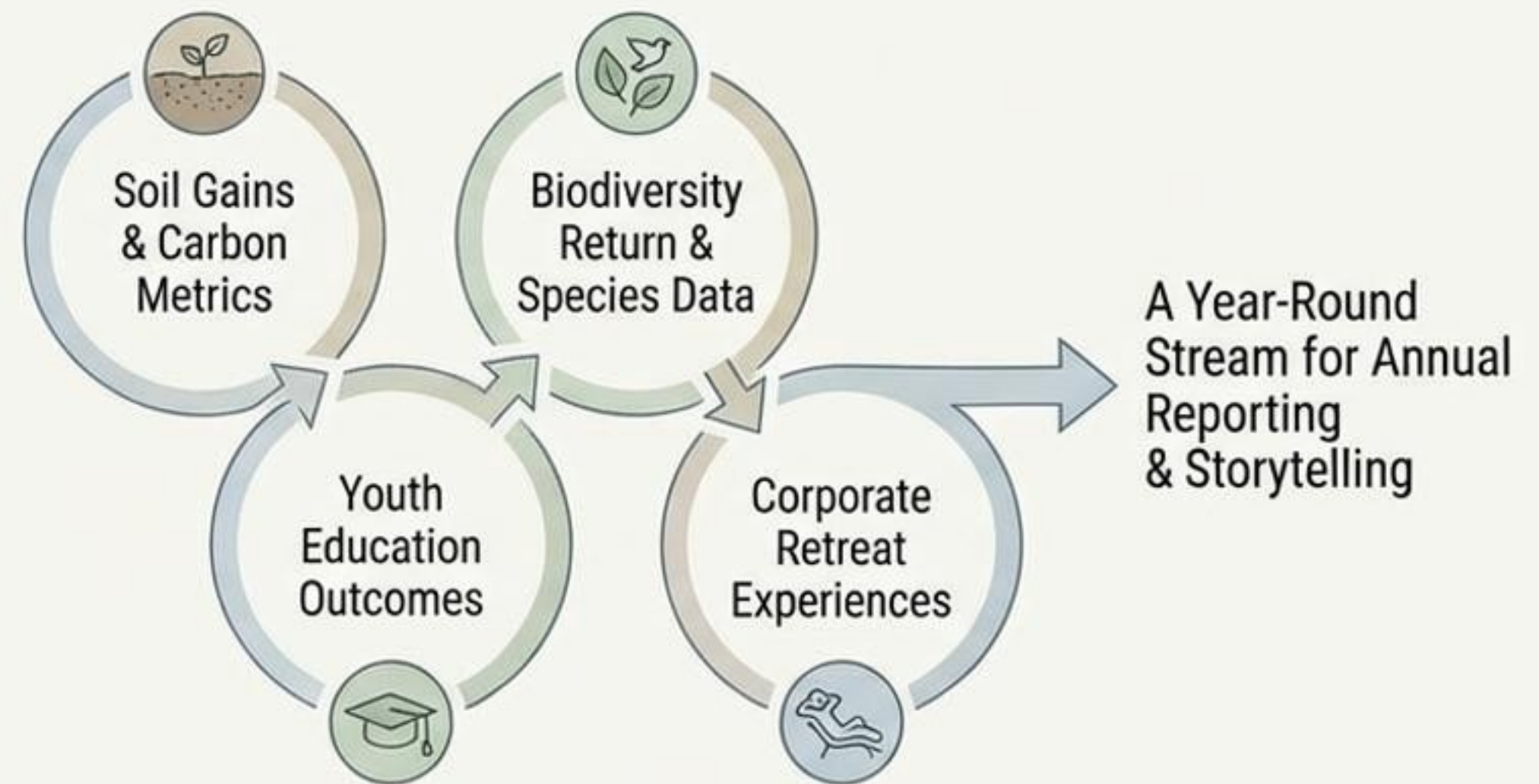
A Branded ESG Presence & Year-Round Narrative

Tangible, Branded Assets



Physical assets for shareholders to visit & ESG teams to showcase

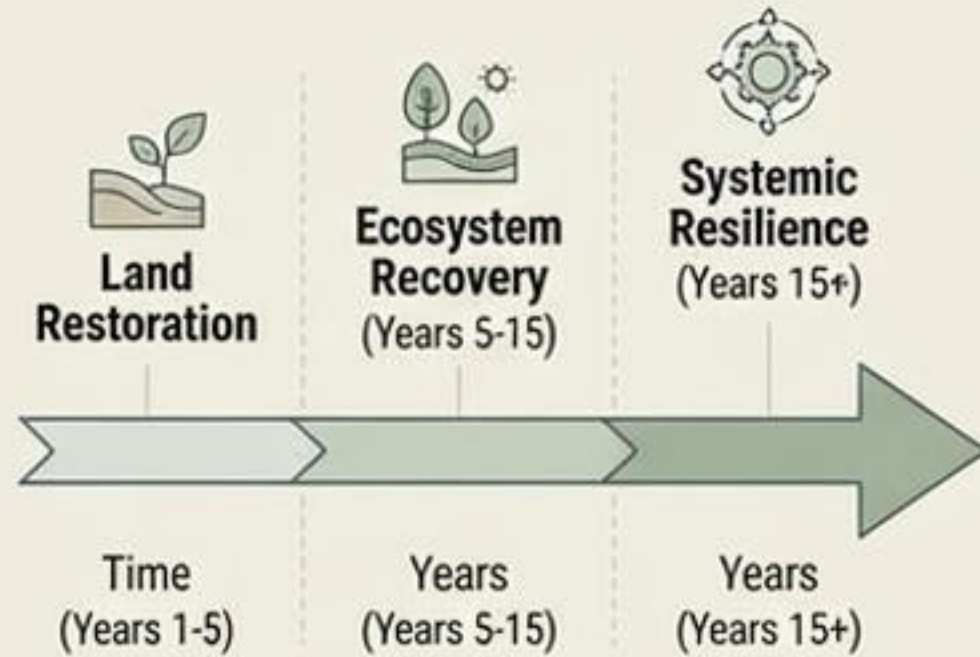
Continuous Communications Content



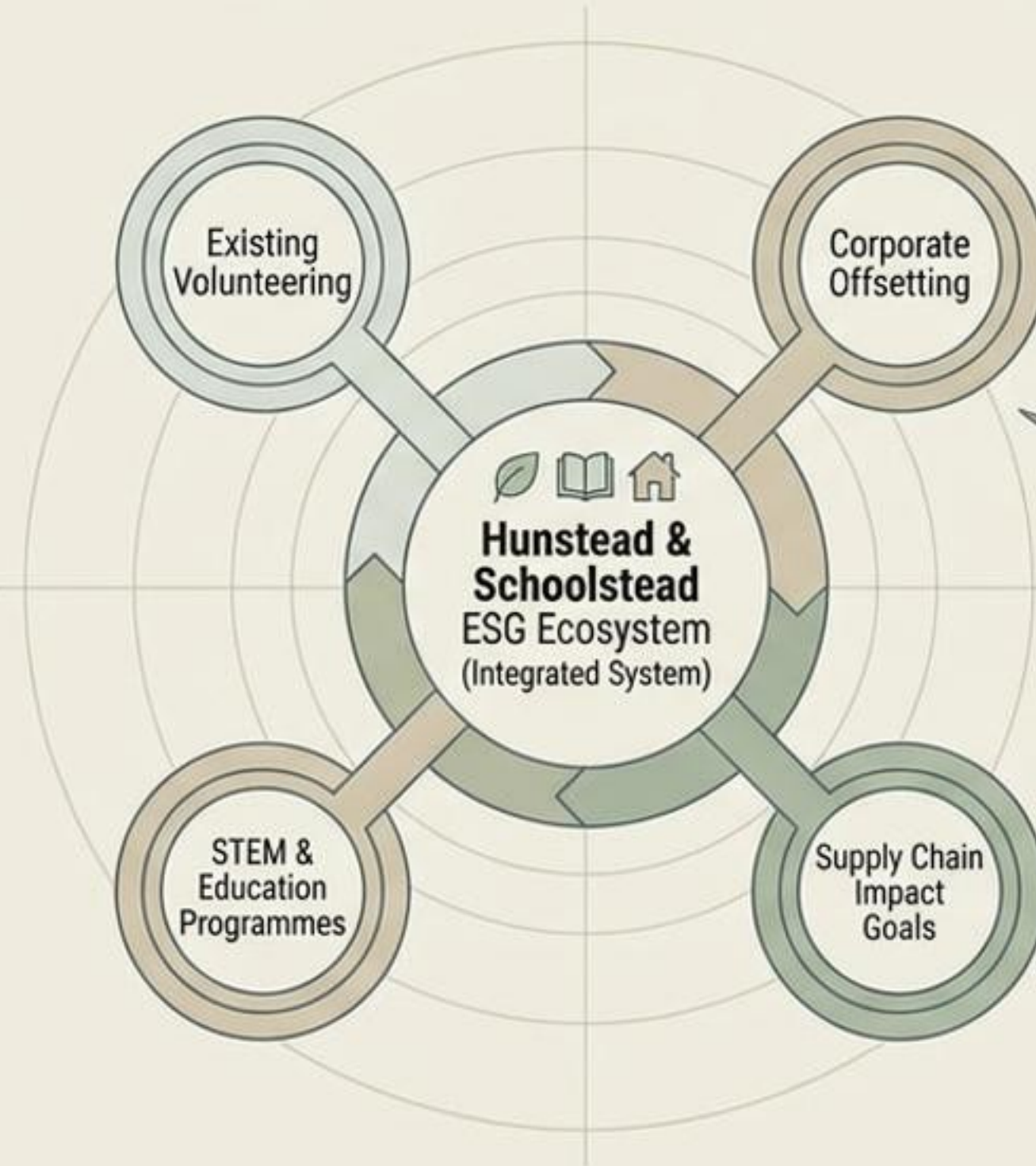
Hunstead & Schoolstead: A Flagship ESG Commitment for Long-Term Transformation

Positioning the sponsor as a front-runner in systemic environmental and social change.

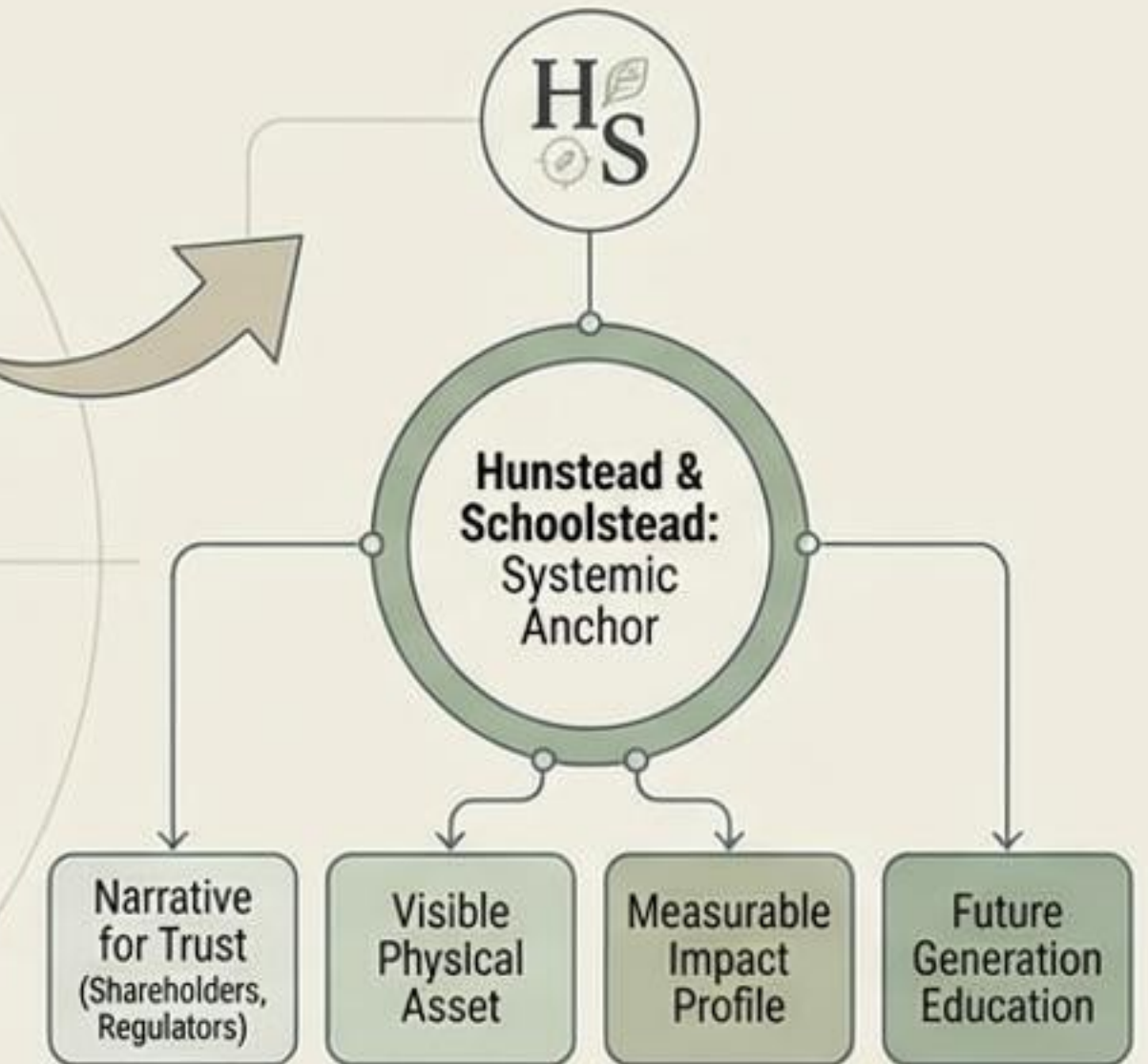
Multi-Decade Regeneration Signals Seriousness



- Beyond performative action
- Long-term ecological & social impact
- Auditable outcomes



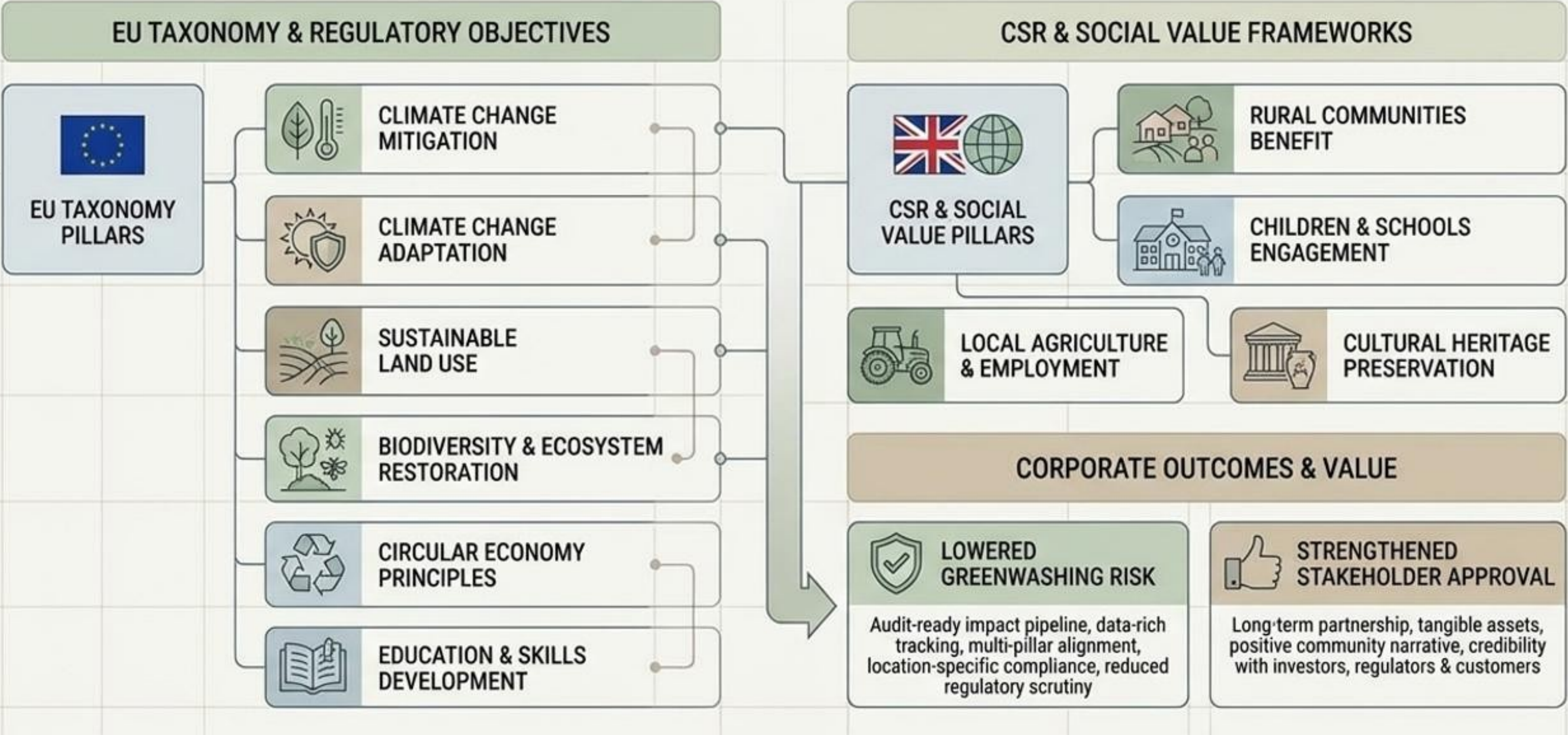
Gravitational Centre of Corporate ESG Story



This is not just another project; it's a long-term regenerative partnership.

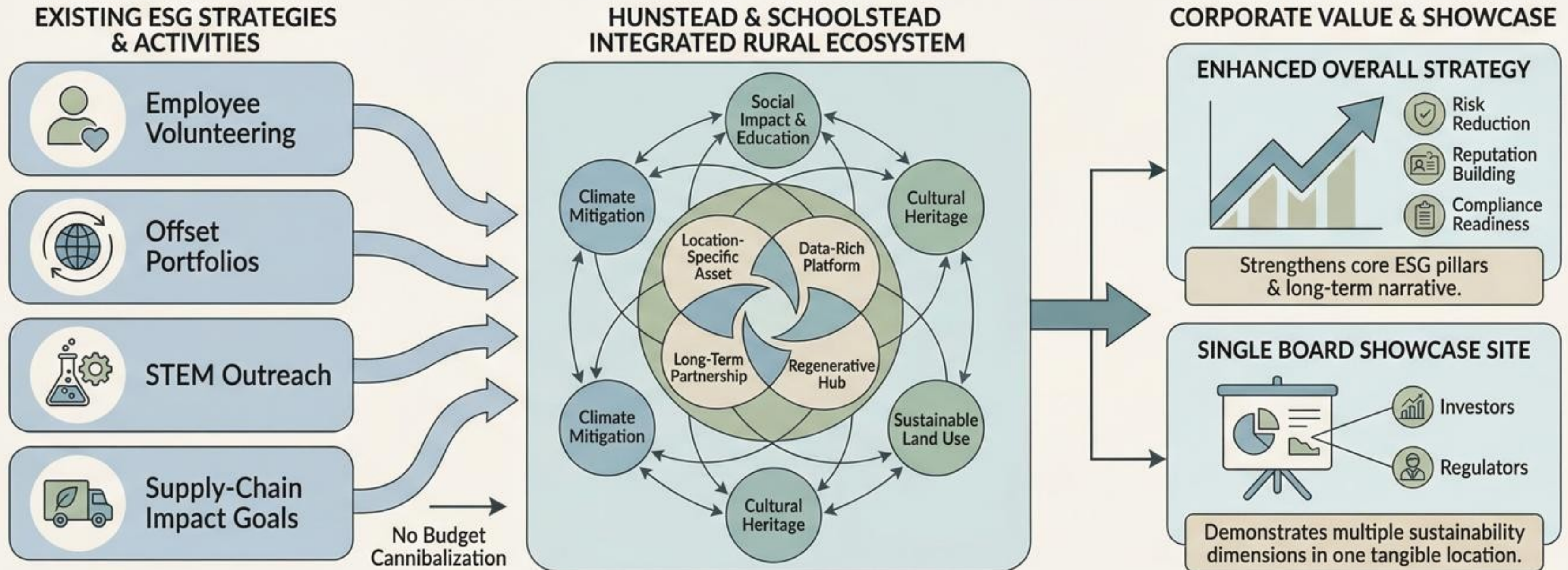
HUNSTEAD & SCHOOLSTEAD: ALIGNED WITH GLOBAL FRAMEWORKS

Mapping Activities to EU & UK Objectives for Risk Reduction & Stakeholder Approval



Strategic Integration & Enhancement: Completing the ESG Portfolio

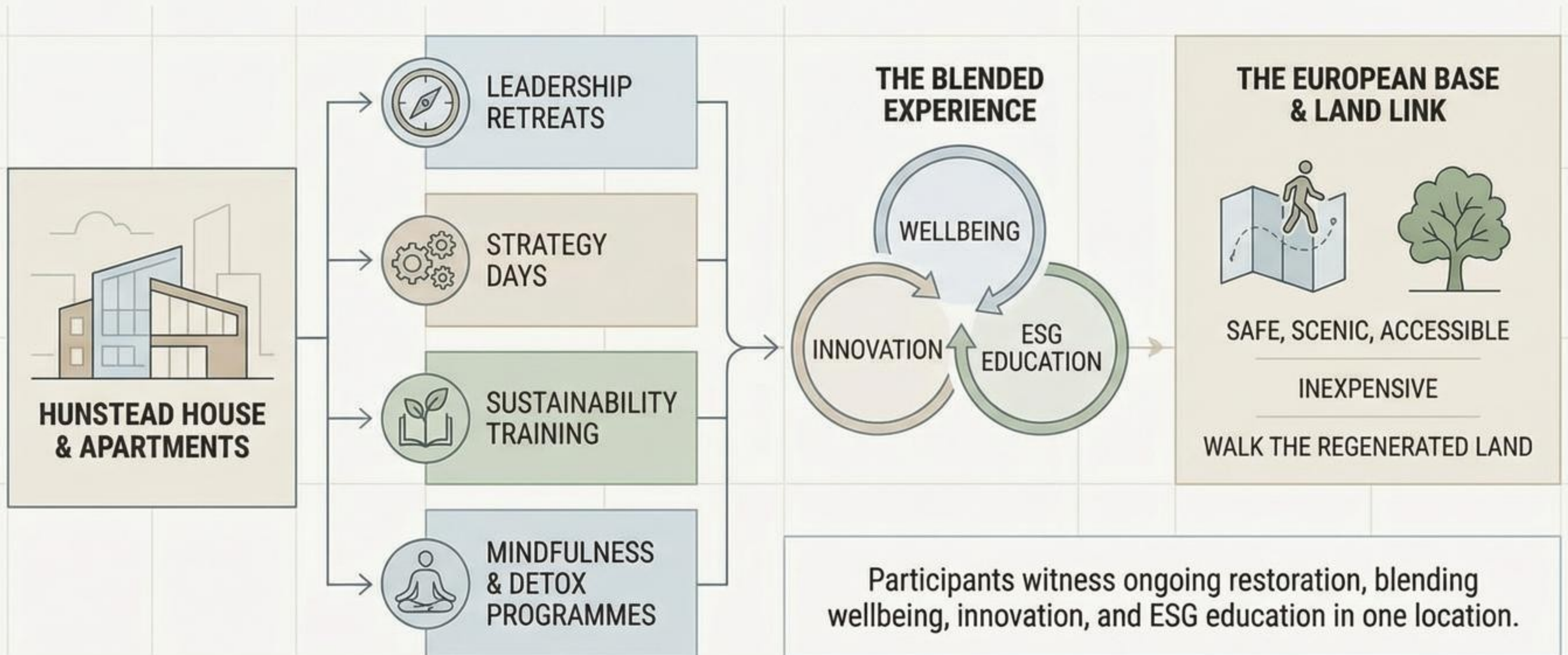
Hunstead & Schoolstead acts as a **location-specific**, data-rich asset that unifies and amplifies existing corporate sustainability initiatives without cannibalizing budget.



An accretive model that transforms existing efforts into a unified, measurable, and powerful strategic asset.

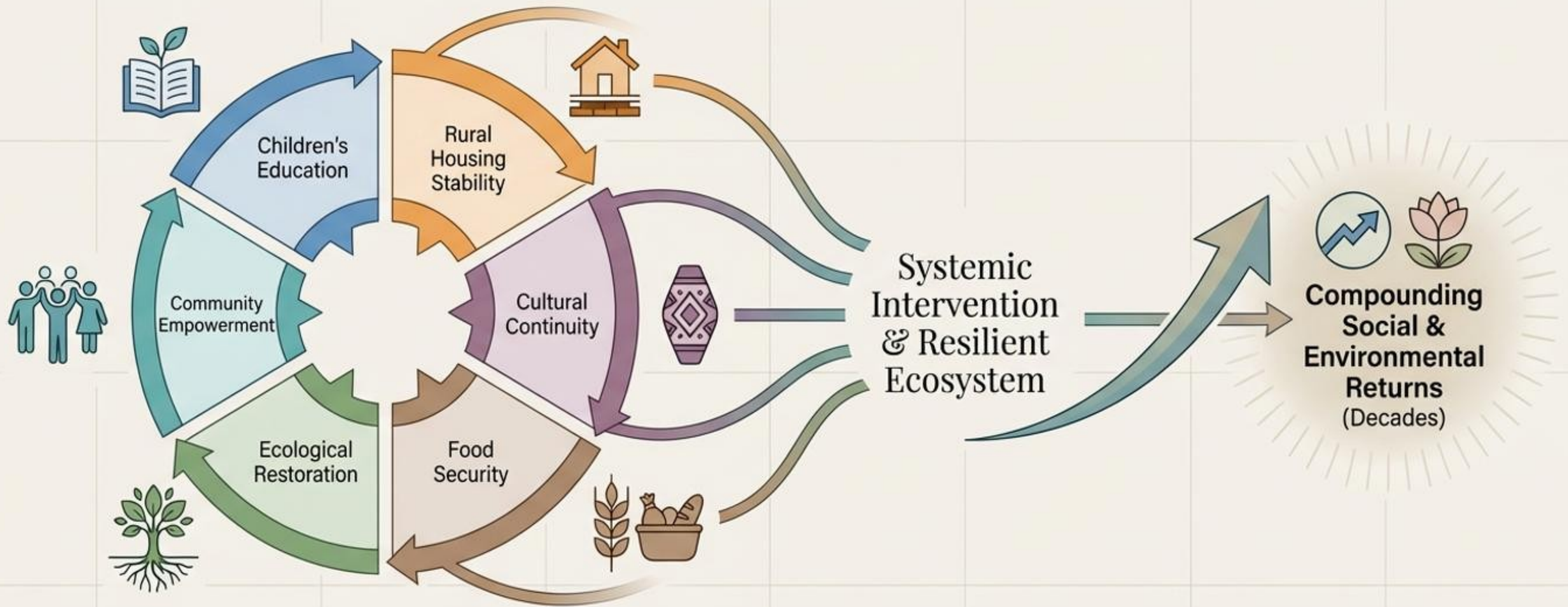
Hunstead House: Corporate Retreat & Learning Centre.

A unique European base for leadership, strategy, and sustainability, directly linked to regenerative land restoration.



Hunstead & Schoolstead: A Systemic Intervention for Philanthropists

Beyond piecemeal gifts: A resilient ecosystem generating compounding social and environmental returns.



An integrated approach moving beyond isolated projects to long-term, exponential impact.

Why This Investment is Strategically Low-Risk

Appreciating assets, diversified income, and strong data satisfy corporate ESG proof demands.

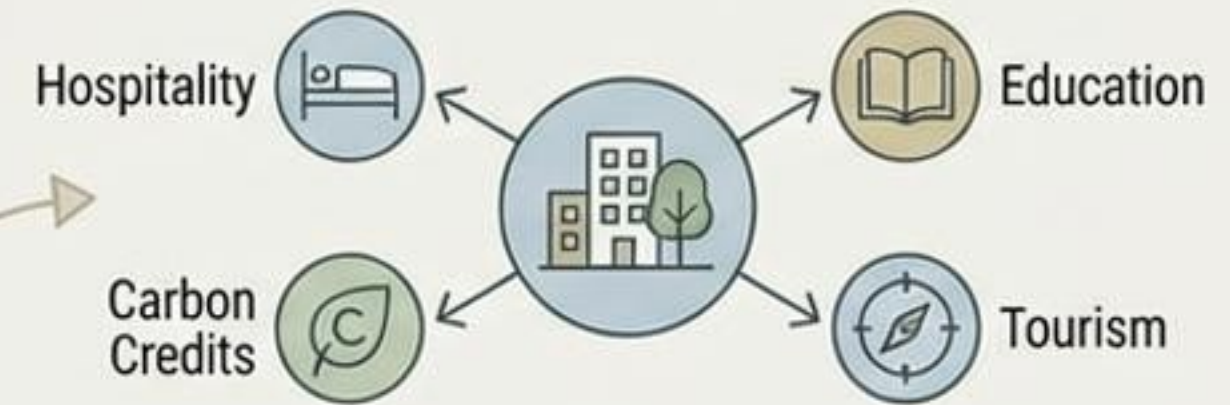
1. Appreciating Asset Value



Land Ownership & Regeneration

Underpins long-term ecological & financial value.

2. Diversified Revenue Streams



Multi-Stream Resilience

Resistant to single-market shocks.

3. Strong Data & Visual Assets



Audit-Ready Impact Pipeline

Satisfies corporate ESG proof demands.

4. Place-Based Investment Shift



Aligns with Market Trends

Verifiable, tangible impact investments.



Hunstead & Schoolstead: The Definitive ESG Investment

A Long-Term, EU-Aligned Partnership for Transformational Leadership in Sustainability



**Flagship
EU-Aligned
Project**

Multi-pillar ecosystem satisfying CSRD, Taxonomy, and Nature Restoration Law objectives.



**Physical
Living
Impact Site**

A tangible, regenerative rural location that corporate sponsors can visit and track.



**Measurable
Audit-Ready
Profile**

Annualized carbon, biodiversity, and social impact data designed for regulatory reporting.



**Future-Focused
Education**

Integrated Schoolstead program delivering intergenerational environmental literacy.



**Regenerative
Retreat Venue**

Hunstead House offers corporate leadership a purpose-driven off-site experience.



**Low-Cost
High-Impact
Footprint**

Efficient capital deployment in a high-upside European geography.



**Credible
Communications
Narrative**

A year-round stream of authentic stories for stakeholders, media, and reports.



**Long-Term
Transformational
Partnership**

Defines the sponsor as a genuine leader in environmental and social transformation.

Integrated Rural Ecosystem · Audit-Ready Impact · Long-Term Partnership

